



Way of Life!

# BURGMAN







# It rules.

BURGMAN.

The name is synonymous with two-wheel luxury.

For an entire generation of riders, BURGMAN has redefined the motorcycling experience. In ways once unimaginable, it has brought performance and comfort into alignment.

It has presented motorcyclists everywhere with new ways to think about the twin pursuits of pleasure and freedom.

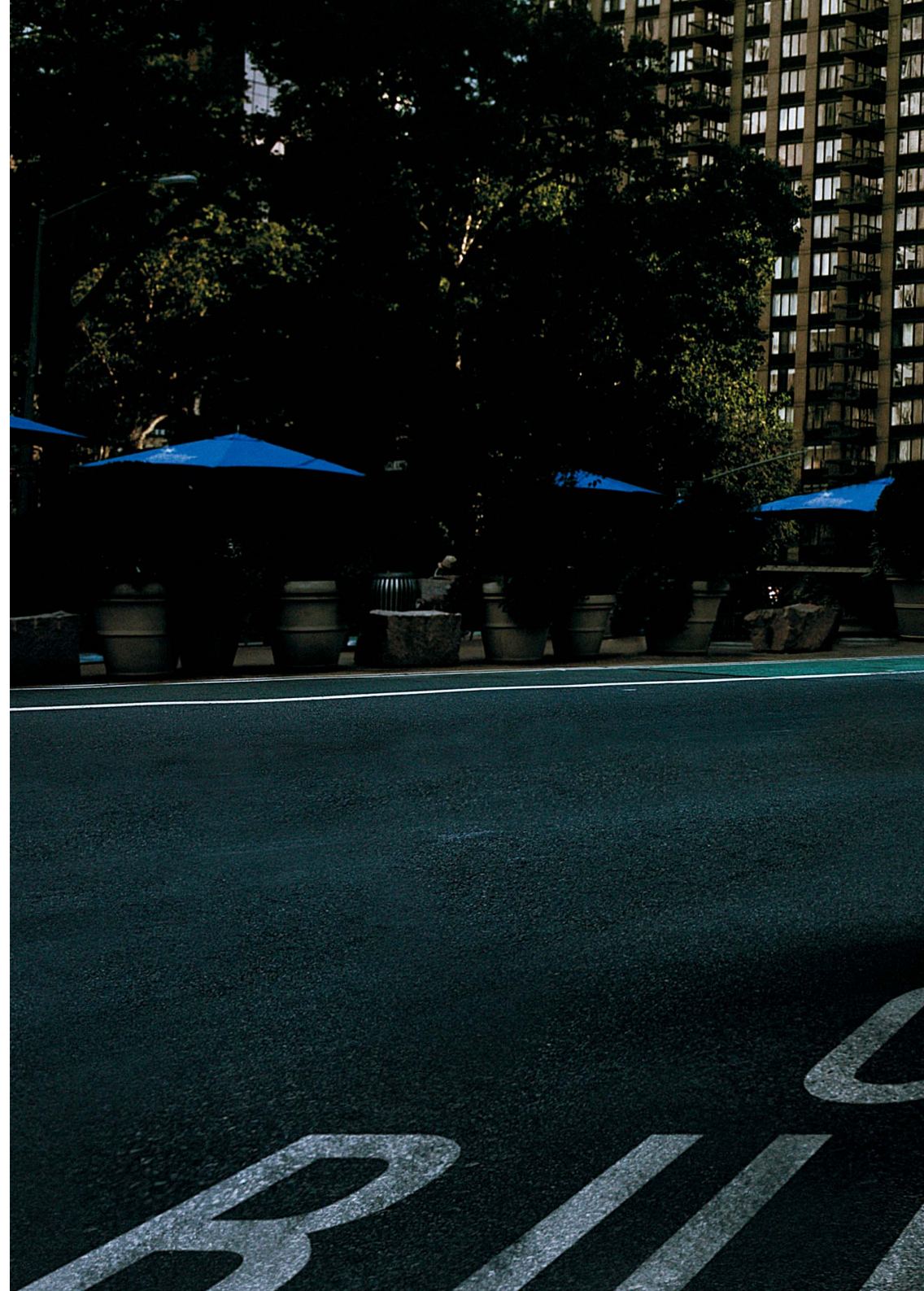
Now make way for a new BURGMAN 650.

Control has never come so freely.

Power has never flowed with such ease.

Every movement feels smooth and graceful.

Every street is yours for the taking.





ONG  
R  
G





## The feeling is empowering.

On the open highway, the BURGMAN 650 cruises in a class of its own.

Such is the abundance of power at hand that your every destination feels near. It's exhilarating. And from the exhilaration is born inspiration.

The ease with which you accelerate, downshift, and manoeuvre around traffic and through every backroad detour is a tour de force.

With surefootedness that inspires confidence and plush ride comfort that leaves you feeling sharp and relaxed long after you hit the road, the BURGMAN 650 empowers you to go much further.

## Styling Design

### The well-contoured lap of luxury

From every angle, the BURGMAN 650 displays the exquisite craftsmanship, smart technology, and superior quality that went into producing this two-wheeled work of art. As your eye traces the majestic bodylines, you see an imposing expression of power and a look of nimbleness. The beautifully contoured body produces an artistic interplay of light and shadow. Details such as sharply styled multi-reflector headlights further exhibit the BURGMAN 650's originality and sophistication. Even the smart, clean arrangement of controls and instruments helps to assure ultimate comfort. Every detail is shaped and positioned to keep you relaxed and completely in control.







### Looking sharp

Slim, sharply styled multi-reflector headlights announce the BURGMAN 650's arrival and keep the road ahead in focus. They're both lit whether you choose high beams or low. Sparkling LED position lights help to heighten visibility, as do turn signals in the rearview mirrors.

### Quality in view

Clean looks are synonymous with refinement. On the BURGMAN 650 they're exemplified by symmetry in the controls and instruments and by understated shapes and colors for everything the rider sees and touches.



\*All lights and indications are illuminated in the photo for illustrative purposes.



### Rear refinement

Sparkling dual multi-reflector tail lights combine outstanding visibility with sophisticated styling that's unique to the BURGMAN 650.

# Performance



## Stay informed

Knowledge is power, so the BURGMAN 650's instruments keep the rider fully informed. Big, easy-to-read analogue dials for the speedometer and tachometer flank a digital display that shows an odometer, twin trip meters, a fuel consumption meter, a fuel meter, a coolant temperature indicator, a thermometer, a clock, an oil level indicator, an oil change indicator, a drive mode indicator (for drive mode and power mode), and a gear position indicator (for manual mode).

\*All lights and indications are illuminated in the photo for illustrative purposes.

## Eco Drive Indicator

The BURGMAN 650 features a new Eco Drive Indicator to encourage riding that may reduce environmental impacts. The Eco Drive Indicator light, located on the instrument panel, will come on when the vehicle is operated in a fuel-efficient manner – and may help riders learn techniques to improve their fuel economy\*.

\*The Eco Drive Indicator does not automatically improve fuel economy but may help riders refine their riding efficiency and improve fuel consumption. Fuel consumption may vary depending on traffic conditions, such as the frequency of starts from stop, distance driven, rate of acceleration (throttle use), chosen speed, and maintenance.





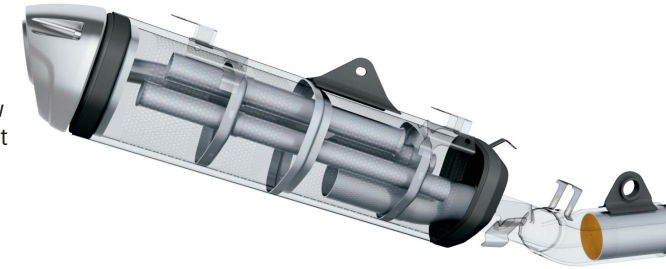
## A higher class of performance

The BURGMAN 650 delivers performance with as much control as you desire. A liquid-cooled 638cm<sup>3</sup> engine offers all the power you need. Computerized fuel injection, a Pulsed-secondary AIR-injection (PAIR) system, and an O<sub>2</sub> feedback system with catalyzer boost fuel efficiency and minimize emissions. Refined transmission setting and reduced mechanical losses contribute to boost fuel economy even more; the engine uses 15% less fuel\* than that of the previous model in drive mode. Meanwhile, superlative control comes from a Suzuki Electronically-controlled Continuously Variable Transmission (SECVT). By just toggling buttons on the handlebars, you can choose three distinct transmission modes: two fully automatic modes (Drive and Power) and Manual. Drive mode heightens efficiency at normal road speeds and gives smooth, linear, almost shock-free power delivery for easy riding. Power mode gives more punch when you twist the throttle. And Manual mode lets you thumb-toggle between six preset gear ratios for a unique feeling of control. The SECVT's updated design includes new clutch plates that cause 35% less drag.

\*Measured in the Worldwide Motorcycle Test Cycle (WMTC).

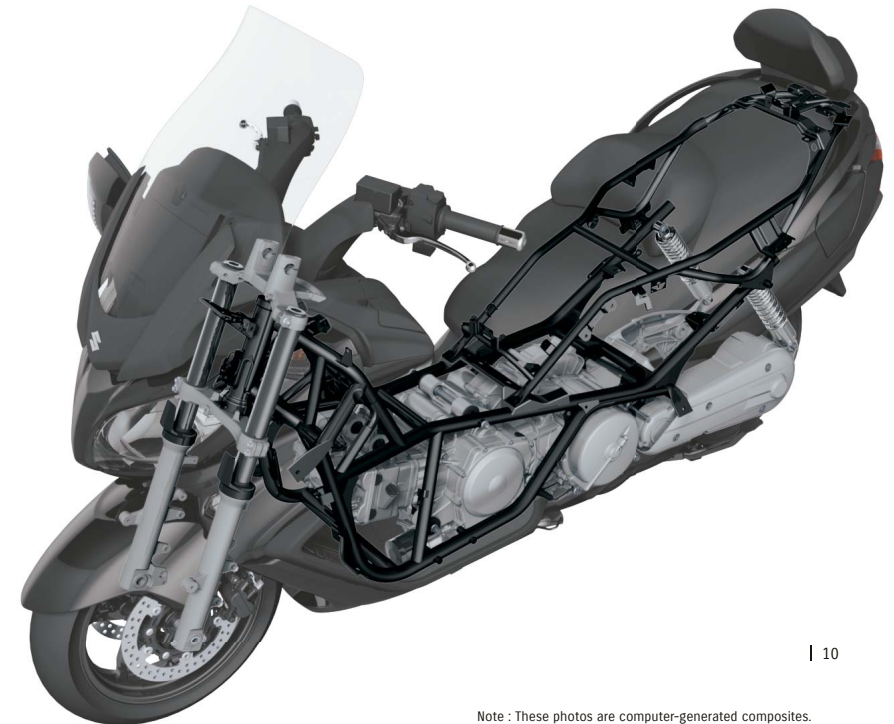
## Clean looks

The exhaust system is sleek thanks to a new-look triangle-section muffler. And it's engineered to keep emissions so low that the BURGMAN 650 satisfies the most stringent regulations.



## Beautifully balanced

A tubular frame and aluminium-alloy swingarm position the engine and transmission for balance and agility. The frame inherits the long, 1595mm wheelbase of earlier Burgmans for a sporty, controllable ride and has a newly designed, slimmer tail section for sleeker, sportier bodywork. Plenty of wheel travel (110mm at the front and 100mm at the rear) helps to keep the ride smooth.



Note : These photos are computer-generated composites.

## Equipment



### Room for everything

The BURGMAN 650 has room for plenty of gear. A cavernous, 50-litre underseat compartment can hold two full-face helmets and has a light for nighttime convenience. A cable lock allows you to secure a helmet outside the compartment to make space for luggage inside. Three compartments below the handlebars provide space for maps and other items you might need on the road. One contains a DC outlet that's ideal for charging a mobile telephone.

#### Note

- Helmets and luggage items are shown for illustrative purposes only.
- Helmets of certain shapes may not fit in the underseat compartment.
- The weight limit for items in the underseat compartment is 10kg.
- The weight limit for items in the front compartments is 1.5kg.
- Do not use the storage compartments for items that are fragile, valuable, dangerous, or susceptible to heat.



### Powered convenience

The windscreen is shaped to give great wind protection and a clear view of the road. It's electrically adjustable to suit the rider's height. For convenience in tight parking spaces, the rearview mirrors can be retracted electrically at the touch of a button.



### Adjustable comfort

The seat is optimally sized and thickly padded for two-up luxury even on long journeys. The rider's backrest can be adjusted forward and backward by 50mm for optimal support. No tools are necessary.



### Advanced security

Security technologies help to protect your investment in the BURGMAN 650. The Suzuki Advanced Immobilizer System (SAIS)\* uses an electronic identification system in the owner's key to prevent unauthorized people from starting the engine. Plus, the ignition switch is protected by a magnetic cover that opens only for the owner's key.

\*Not available with North American specifications.

## Brake



### Stopping power

All-round disc brakes deliver reassuring stopping power. The front brakes have an updated design with floating discs for more consistent braking performance.

### Antilock controllability

An antilock braking system (ABS)\* helps to maximize the rider's control by preventing the wheels from locking during hard brake application. The ABS unit weights 55% less than that of the previous model.

\*The ABS is a supplemental device for brake operation, not a device for shortening stopping distance. Always remember to reduce speed sufficiently before approaching curves and corners.



### Parking security

A lever-operated brake lock lever gives the rider extra peace of mind. The lever has a stylish new design that makes it easier to reach and operate.



## The Executive Experience

For even greater luxury during every ride, choose the Executive grade, which comes with three exclusive features.



### Warm hands

Suzuki's attention to luxury extends even to the rider's hands. The handlebar grips incorporate electric heaters that can be controlled by the rider — a welcome source of warmth when temperatures drop below comfortable.



### Winter warmer

A flick of a switch located next to the ignition activates an electric seat heater for the rider and passenger. So cold winter days are no reason to feel less than comfortable when you're riding the most luxurious scooter on the road.



### Passenger support

A great shared riding experience is assured by a backrest that firmly supports a passenger to provide comfort and a sense of security.

## Accessories



Top case



Side visor



Chrome front garnish



Tunnel bag

## Grades & Colors

**BURGMAN**  
EXECUTIVE



**BURGMAN**



Pearl Bracing White (RB5)



Metallic Mat Fibroin Gray (PGZ)



Glass Sparkle Black (YVB)

## Specifications (tentative)

	BURGMAN 650 Executive	BURGMAN 650
Overall length	2265 mm (89.2 in)	
Overall width	810 mm (31.9 in)	
Overall height	1420 mm (55.9 in)	
Wheelbase	1585 mm (62.4 in)	
Ground clearance	125 mm (4.9 in)	
Seat height	760 mm (29.9 in)	755 mm (29.7 in)
Curb mass	277 kg (611 lbs)	275 kg (606 lbs)
Engine type	4-stroke, 2-cylinder, liquid-cooled, DOHC	
Bore × Stroke	75.5 mm × 71.3 mm (2.97 in × 2.81 in)	
Displacement	638 cm <sup>3</sup> (38.9 cu.in)	
Compression ratio	11.2 : 1	
Fuel system	Fuel injection	
Starter system	Electric	
Lubrication system	Wet sump	
Transmission	SECVT	
Suspension	Front	Telescopic, coil spring, oil damped
	Rear	Swingarm type, coil spring, oil damped
Rake / Trail	25°25' / 103 mm	
Brakes	Front	Disc, twin
	Rear	Disc
Tires	Front	120/70R15M/C 56H, tubeless
	Rear	160/60R14M/C 65H, tubeless
Ignition system	Electronic ignition (Transistorized)	
Fuel tank capacity	15.0 L (4.0/3.3 US/Imp gal)	
Oil capacity (Overhaul)	2.9 L (3.1/2.6 US/Imp qt)	

# Seat of freedom.

To be sure, two wheels are practical. And touring the countryside is certainly fun.

But deep in your bones you know the real reason you ride: the promise of freedom.

The BURGMAN 650 lets you touch it.

All the inspiration you need sits here in this seat of freedom.

The easy ride says get comfortable and trace the arc of every whim.

You just need an open road.

The limits are beyond your imagination.



Specifications, appearance, colors (including body color), equipment, materials and other aspects of the "SUZUKI" products shown in this catalog are subject to change by Suzuki at any time without notice, and they may vary depending on local conditions or requirements. Some models are not available in some regions. Each model may be discontinued without notice.  
Please inquire at your local dealer for details of any such changes.  
Image contains computer-generated composites.

- Always wear a helmet, eye protection and protective clothing.
- Enjoy riding safely.
- Read your Owner's Manual carefully.
- Never ride under the influence of alcohol or other drugs.

PRINTED IN JAPAN BURGMAN 650/Executive (AN650/Z) Product Information  
99999-A0119-231 OCT. '12

**SUZUKI MOTOR CORPORATION**

300 Takatsuka-cho, Minami-ku, Hamamatsu City, JAPAN 432-8611 [www.globalsuzuki.com](http://www.globalsuzuki.com)

